

CHEMI-SMART 5000**> The ultimate system**

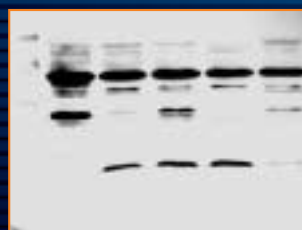
Chemi-Smart 5000 is an image acquisition system dedicated to the capture of chemiluminescent gel images. Using the most advanced cooled CCD technology in combination with a state of the art optical lens, the Chemi-Smart 5000 offers a very high sensitivity and an extended dynamic range.

Chemi-Smart 5000 is especially designed to be very simple to use. Just load the chemi-sample into the darkroom, adjust the optics and launch the image acquisition, according to your protocol.

Data produced by the Chemi-Smart 5000 are directly compatible with the broad range of image analysis software developed by Vilber Lourmat. This includes Bio-1D for 1D gel quantification and Bio-Gene software.

Key features

- High sensitivity for low limits of detection
- Latest generation of cooled CCD sensor
- Ingenious multi-positions tray system to keep your sample as close as possible to the camera sensor
- Outstanding quantum efficiency for chemiluminescence applications
- Unrivalled sensitivity at full resolution, making the binning mode unnecessary
- Brightest fixed lens (f:0.95) for very high light transmission efficiency
- Convenient darkroom especially developed for chemiluminescence
- Double cooling barrier for enhanced signal to noise ratio
- Large sample size (20x16cm)
- Images captured through either a fully automatic mode, a manual mode or a video mode for sequential capture
- Customized automatic mode, taking your own protocols into consideration
- Image compatible with Bio-Profil software.



Chemiluminescence detection

- ECL™, ECL plus™
- CDP Star™
- SuperSignal™
- CSPD™